

Date: 15-06-2025

DISABLED-FRIENDLY, BARRIER-FREE ENVIRONMENT

Kakinada Institute of Engineering Technology has Disabled-Friendly, Barrier Free Environment built environment with ramps for easy access to classrooms. Institution provides barrier-free environment where people with disabilities can move about safely and freely and use the facilities within the built environment. The environment supports the independent functioning of individuals so that they can participate without assistance in everyday activities within the campus. According to the persons with disabilities act 2016, discrimination against disabilities are strictly prohibited. KIET intend to provide comprehensive and inclusive Teaching and Learning environment to students and any employees. Aiming to this, institution made ramps in each building. All the Academic Buildings, Offices, Hostels, Guest House, Library, Health Centre, Activity Centre, Canteens and Sports Complex, Boards etc. are constructed complying the PWD/CPED norms.

The Institution has friendly, barrier free environment





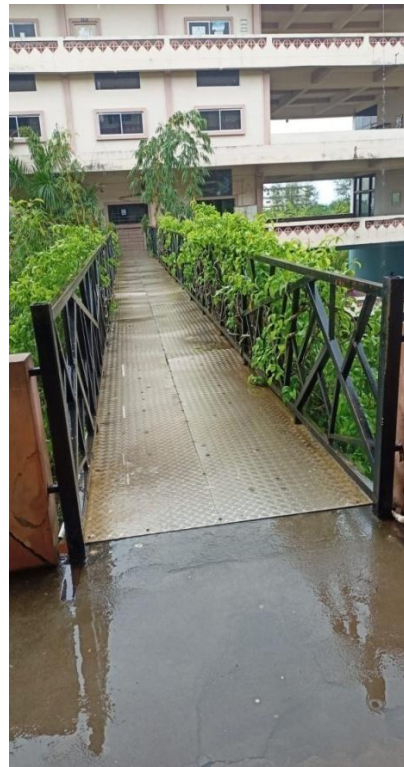
The Way towards Lift:



Lift:



Ramp:



DIVYANGJAN FRIENDLY WASHROOMS

KIET provides disabled-friendly washrooms with all the necessary places provide with signage boards.



TDT
PRINCIPAL
Kannada Institute of Eng. & Technol.
KORANG